

Progression In Geography

www.thehessleacademy.co.uk



YEAR 7



I can independently name the continents and oceans around the world



YEAR 7



I can independently recall knowledge about the continents and oceans

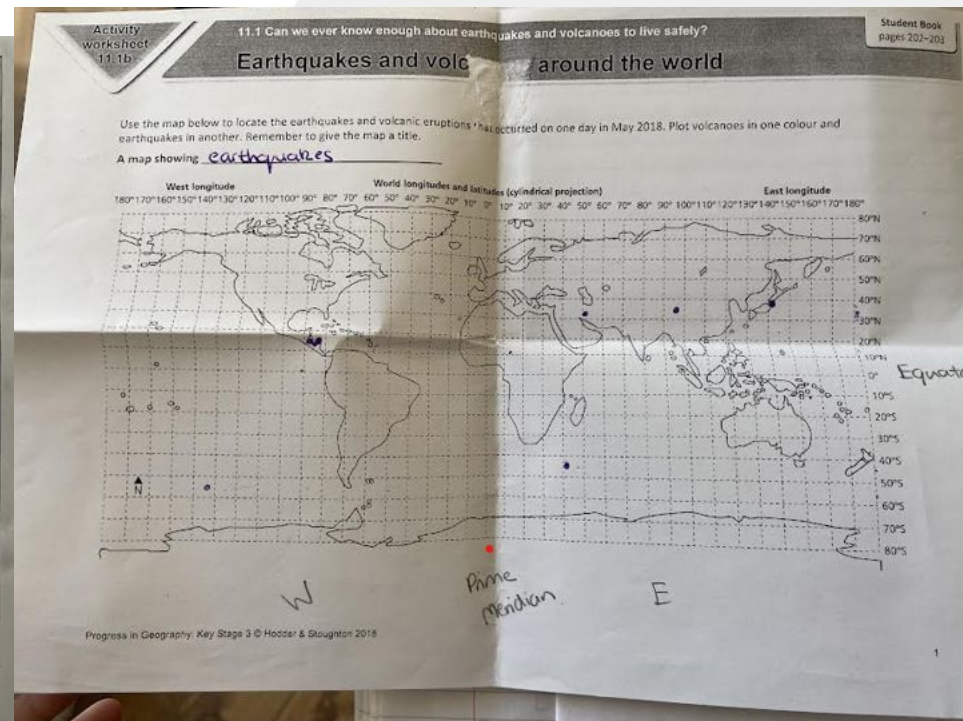
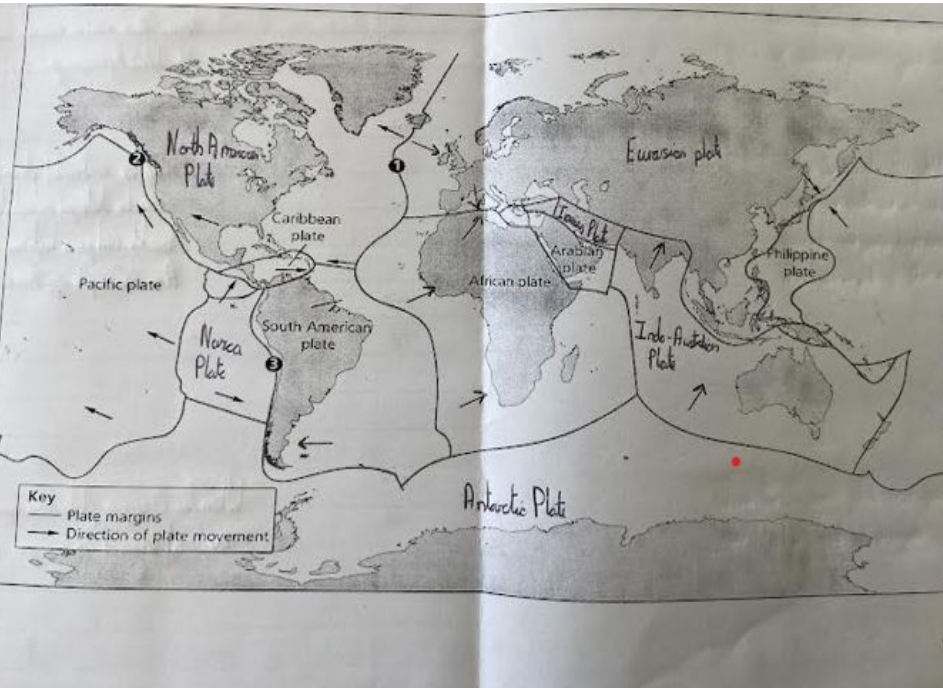
How can we locate places around the world?

I cover an area of 9.9 million km ² .	North America Europe
I have the biggest population in the world.	Asia ✓
I am the largest ocean.	Pacific Ocean ✓
I have a population of 1111 million people.	Africa ✓
No people live here!	Antarctica ✓
I cover the smallest area out of all the continents.	Oceania ✓
I am the smallest ocean.	Arctic Ocean ✓
I am a continent that covers 6% of the Earth's surface.	Asia ✓ Africa

YEAR 8



I can use my knowledge recall to identify tectonic plates and hazards around the world.

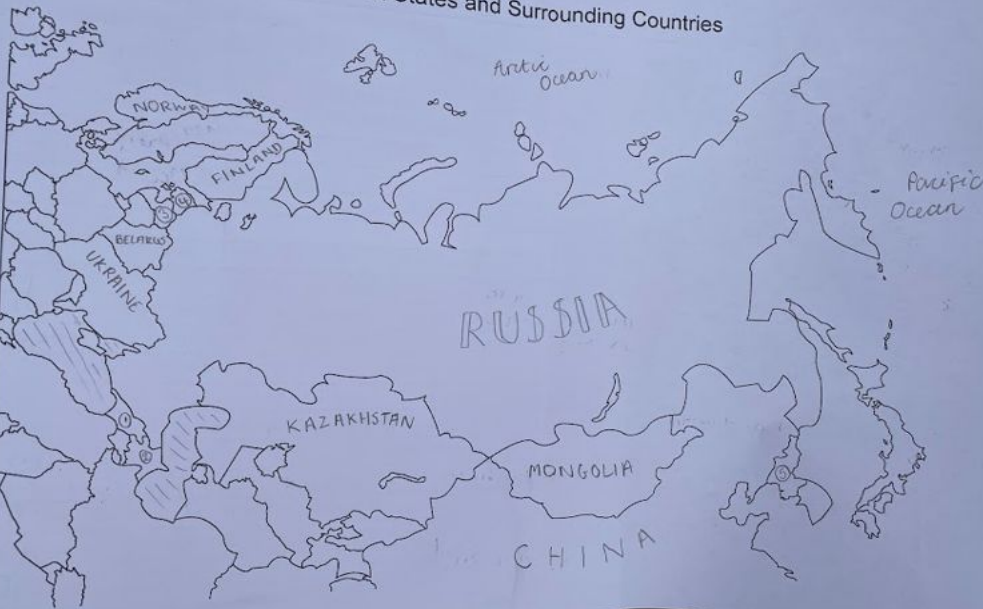


YEAR 9

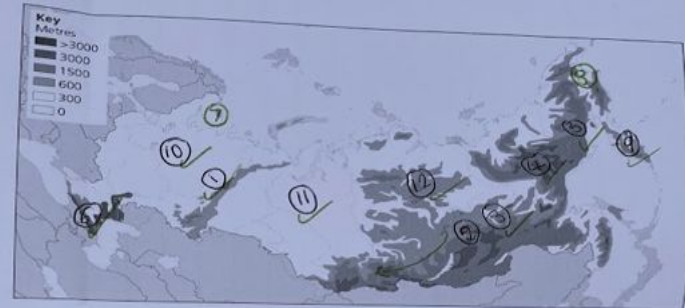


I can describe the location of countries and physical features in unfamiliar locations

Commonwealth of Independent States and Surrounding Countries



On the outline map of Russia below, label the mountain ranges, peninsulas and plains found in Russia.



Mountain ranges:

- ① • Ural Mountains
- ② • Sayan Mountains
- ③ • Yablonovy Mountains
- ④ • Verkhoyansk Range
- ⑤ • Kolyma Range
- ⑥ • Caucasus Mountains

Peninsulas:

- ⑦ • Kola Peninsula
- ⑧ • Chukchi Peninsula
- ⑨ • Kamchatka Peninsula

Plains:

- ⑩ • North European Plain
- ① • West Siberian Plain
- ② • Central Siberian Plateau

YEAR 10



I can use knowledge recall to categorise development data about a range of countries

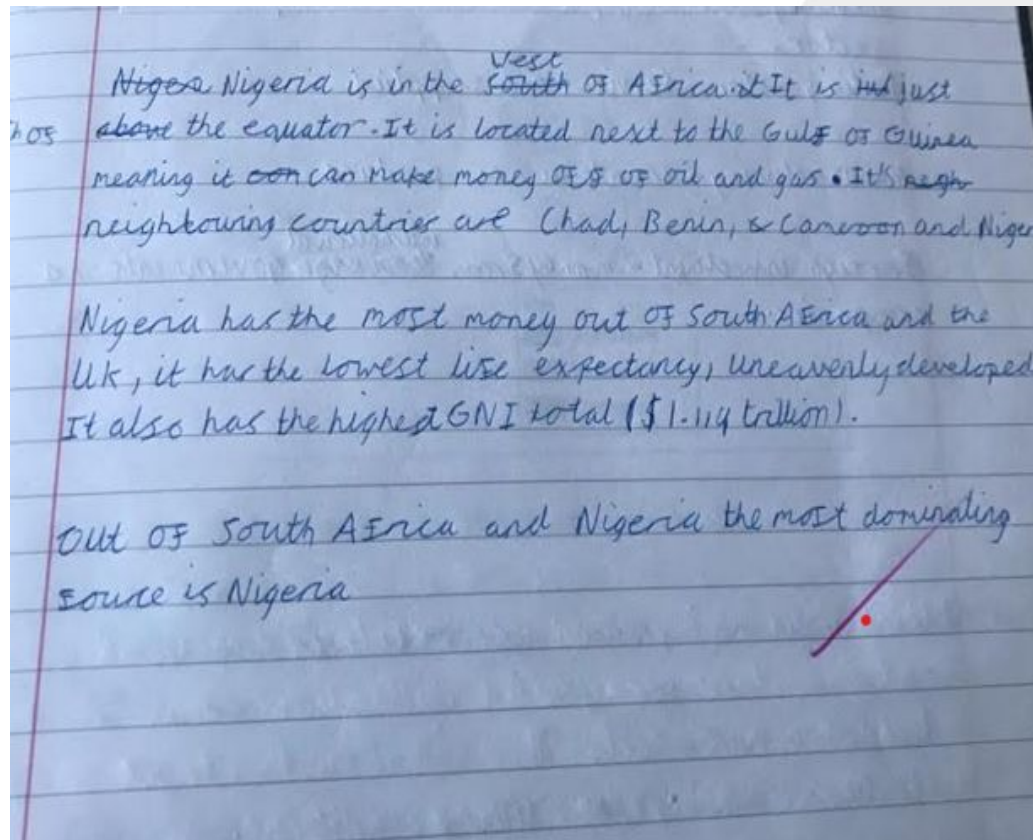
- HDI is a better value to use because it shows LE, and Literacy Rates and GNI instead of just one thing. It shows the social side of things instead of financial things.

	Purchasing Power	Literacy and schooling	Life Expectancy	HDI	Food consumption
USA	Over \$25,000	Over 95%	80	Over 0.9	3774
Russian Federation	\$5000 to \$10000	95% +	72	0.7-0.8	3000-3500
India	\$2500 - \$5000	60-75%	70	0.5-0.6	2000-2500
Chad	\$000-\$2500	40-60%	59	Less than 0.5	2000-2500
Thailand	\$5000 - \$10000	95% +	77	0.7-0.8	2000-2500

YEAR 10



I can use locate a NEE using geographical terminology



YEAR 11



I can use climate data to identify a world ecosystems around the globe.

