



THE CONSORTIUM
ACADEMY TRUST



Parent Guide

2022/23

Information for parents/carers



THE CONSORTIUM
ACADEMY TRUST

Shaping Positive Futures

Welcome

Welcome to Parents and Carers of our new Hessle students.

The Hessle Academy is part of The Consortium Academy Trust. At The Consortium Academy Trust, we are ambitious about the future - creating learning environments and excellence in teaching and learning that provide our children and young people with the best chance at a successful future.

Our vision is **Shaping Positive Futures** as we strongly believe our sole purpose is supporting children and young people to achieve their ambitions. This vision gives us a shared sense of purpose and direction and is something we are all proud to be a part of.

Across our community of nine schools our people are doing remarkable things by being fully engaged in work that transforms lives, supporting children and young people to grow in confidence and develop into citizens we are proud of.



We are ambitious to shape positive futures so each young person can excel and achieve their goals in education and beyond and we welcome you as you begin to explore and develop your interests and passions at the start of your education journey with us.

Lizann Lawson
CEO The Consortium Academy Trust

www.consortiumtrust.co.uk



We are ambitious to shape positive futures so each young person can excel and achieve their goals in education and beyond and we welcome you as you begin to explore and develop your interests and passions at the start of your education journey with us.





Respect
Resilience
Aspiration
Responsibility
Integrity
Kindness

Contents

- 04** Welcome to Hessele
- 06** Key People
- 08** Vision Statement
- 09** Our Vision for Our People
- 10** School Day
- 11** Healthy Lifestyles
- 12** Attendance
- 13** Assessment & Outcomes
- 14** Home Groups & Banding
- 15** Attitude to Learning
- 16** Uniform
- 18** Policies & Communication
- 20** School Meals & Online Payments
- 21** How Do I Get Started?
- 22** Sample Menu



Welcome to Hessle

Dear Parents and Carers

I am delighted that your child has been allocated a place at Hessle High School and Sixth Form College.

You and your child have made a great choice and I welcome you warmly into our school community. You join us at a very exciting time as your school continues to grow and develop.

For the fifth year in succession, we have been oversubscribed on entry into Year 7. This is due to the burgeoning reputation that we have built for excellence

in student care and education. The security that this provides the school has enabled us to invest heavily in growing our teaching team, alongside further investment in teaching resources and playground space and shelter. Furthermore, as part of The Consortium Academy Trust, our staff are provided with exceptional opportunities for developing their skills and collaboration.

Whilst the pandemic has disrupted examinations for the last few years, high quality teaching and learning has continued to take place across all year groups. We are fortunate that we have an experienced body of staff who are dedicated to improving their own skills and who always want the best for the students in their care.



You and your child have made a great choice and I welcome you warmly into our school community. You join us at a very exciting time as your school continues to grow and develop.





Respect
Resilience
Aspiration
Responsibility
Integrity
Kindness

They are supported by a highly-motivated support staff. From the Assistant Head of Year, the administration team, the caretakers, cleaners and an array of specialist staff providing support for well-being, special needs, English as an Additional Language, medical care; they all have one thing in common – a determination to ensure that our students remember their time at Hessle as being one of the most enjoyable and successful time of their lives.

I believe that the success of a school is a team effort and parents/carers are an essential part of the team. Motivated students, highly skilled, dedicated and empathetic staff and supportive parents. That is an unbeatable team and I look forward to your support in the coming years. We have invested significantly in broadening our student services team recently with the goal of improving our communication with parents. We are committed to bringing rapid responses to your queries and providing you with the information that you need to support the learning and development of your child. However, it is also imperative that we are able to contact you and that we have a reliable emer-

gency contact. Without your support, and working together with us, your child will find it more difficult to realise their potential. Please ensure that you always inform us of any change of contact information.

Allow me to draw your attention to our Academy Values and Vision Statement within this booklet. Our Values are at the heart of everything we do and we are committed to instilling these important qualities in our young people. Likewise, our Vision reflects the development of the whole student community affording equal importance to the development of character and cultural and global awareness as it does to educational outcomes. We firmly believe in this and are committed to delivering this for your child. I very much look forward to meeting you all very soon.

Thank you once again for your trust and in anticipation of your future support.

Vince Groak
Headteacher



Key People



Vince Groak
Headteacher



Louise Price
*Deputy Headteacher
(Quality of Education)*



Ashley Chapman
*Deputy Headteacher
(Pastoral)*



Jo Anderson
*Assistant Headteacher
(SEND & Inclusion)*



Chris Sinclair
*Assistant Headteacher
(Student Welfare)*



Alison Pinkney
*Head of Year 7 &
Transition Coordinator*



Vicky Briggs
Assistant Head of Year 7



Liam Julian
Head of Year 8



Rebecca Lacey
Assistant Head of Year 8



Key People



Tracy Taylor
Head of Year 9



Kelly Staveley
Assistant Head of Year 9



Neil Leckenby
Head of Year 10



Sammie Newman
Assistant Head of Year 10



Jenni Todd
Head of Year 11



Nicola Green
Assistant Head of Year 11



Kerry McDonald
Attendance Manager



Tina Brown
Attendance Officer



Stuart Crooks
Inclusion Manager



Karen Maulgue
*Specialist Support
(Inclusion)*



**THE
HESSLE
ACADEMY**

Vision Statement

Mission Statement

“ *Everyone can achieve the extraordinary.* ”



Respect

We respect ourselves; we respect each other; we respect our diverse community and our environment.



Resilience

We are determined, we do not give up when things get tough. We persevere. We know that learning is often hard but we know that it will be worth it.



Aspiration

We aim high; we have ambitious expectations of ourselves and others. We believe that we can make a difference to our local community.



Responsibility

We take responsibility for our own actions; equally, we are not blamed when we make mistakes. We see mistakes as an opportunity to do it better next time.



Integrity

We do the right thing. We are honest with each other and ourselves. We are comfortable in ourselves and proud of our values.



Kindness

We treat each other with kindness, courtesy and have good manners.



Our Vision for Our People

All of our learners develop exceptional character.

Character that exemplifies a growth mind-set; a strong work ethic; confidence and high levels of grit, resilience and determination; ensuring they are fully prepared to flourish in an ever-changing world. **(Based on our Values of Resilience, Respect, Responsibility, Integrity)**

In every phase, all of our learners achieve excellent outcomes.

Following a broad and rich curriculum, our learners achieve high-quality qualifications that are valuable and enable them to progress to their future pathways and thrive on a global stage. **(Aspiration, Integrity)**

All of our learners develop high levels of cultural and global awareness.

We promise all of our learners diverse experiences that enrich their lives, enabling them to engage in, and empathise with, the wonderful world beyond their local community. **(Aspiration)**

Our children, young people and adults will create positive and happy memories that last for a lifetime.

Through exceptional relationships, and rich and varied learning experiences, our learners will reflect on their schooldays truly as the 'best years of their lives'. **(Respect, Aspiration, Kindness)**



**Period 6:
Optional
Extra-curricular
Activities
15:00 - 16:00**

School

Day

Cohort A *Years 7, 10, 12 & 13*

Activity	Start	Finish	Time
Tutor	08:35	08:55	20
Period 1	08:55	09:55	60
Break	09:55	10:15	20
Period 2	10:15	11:15	60
Period 3	11:15	12:15	60
Lunch	12:15	12:55	40
Period 4	12:55	13:55	60
Period 5	13:55	14:55	60

Cohort B *Years 8, 9, & 11*

Activity	Start	Finish	Time
Tutor	08:35	08:55	20
Period 1	08:55	09:55	60
Period 2	09:55	10:55	60
Break	10:55	11:15	20
Period 3	11:15	12:15	60
Period 4	12:15	13:15	60
Lunch	13:15	14:00	45
Period 5	14:00	15:00	60



Healthy Lifestyles

We encourage all of our students to engage in lifestyles that are healthy and respect the environment.

This means:

- Students spend breaks and lunchtimes outside enjoying the fresh air and getting plenty of exercise
- Students may use mobile phones outside but they must be 'off and away' once they enter the school buildings
- Food choices in our canteen promote healthy eating
- Recycling activities are encouraged
- Limited use of packaging on products bought in school



Attendance



The proper place for your child to be on a school day is at school.

If students are not in school then they must have a justifiable reason and a message should be sent to school explaining their absence.



648604 - Option 1

The school telephone number is 648604, **choose option 1** for attendance and absence.

Attend today, achieve tomorrow.



= 3.4 days
98.4% attendance



= 6.9 days missed
97.6% attendance



= 10.3 days missed
94.6% attendance



= 13.8 days missed
92.9% attendance



= 20.7 days missed
89.2% attendance

Guidelines on absence and copying up missed work

Normally students will be expected to copy up work missed, as a result of absence from school, within a period of two weeks following your return.

It is each student's responsibility to ensure this is done. Normally students will be expected to copy up work missed, as a result of absence from school, within a period of two weeks following your return. It is each student's responsibility to ensure this is done. Amendments have been made to the 2006 regulations

in the Education (Pupil Registration) (England) (Amendment) Regulations 2013. These amendments make it clear that Headteachers may not grant any leave of absence during term time.

Further information is available on the school website (www.thehessleacademy.co.uk).

Punctuality

Students should make sure that they arrive at school on time and are in their classroom for the start of the period.

This is the same for ALL lessons.



Assessment & Outcomes

It is extremely important that a student has good attendance at school to achieve their full potential.

The school target for attendance is 96%. The table below shows the impact of good attendance at GCSE for our Year 11 students in 2019*, with students achieving 100% attendance making an average of a grade and a half more progress than a student with less than 90% attendance.

* the last external set of exam data

Attendance	Progress 8 score
100%	+0.8
98%	+0.72
96%	+0.54
90%	+0.4
Less than 90%	-0.78

Progress 8 score shows how much progress a student has made from Year 7 to Year 11.

A score of +1 means a student has achieved one grade higher in each qualification than similar students nationally. A score of -1 means they achieve one grade lower.



Home Groups & Banding



At Key Stage 3 all students will be placed into a home group.

These home groups are in five ability bands. Students will stay in these home groups for most of their lessons. Maths, English and Science groups are set according to ability within each band. For example, the student (right) is placed in home group L for most subjects but in CD2 for English and CD1 for Maths to reflect ability in those subjects.

Initially students are placed into their home group using information we receive from their primary school.

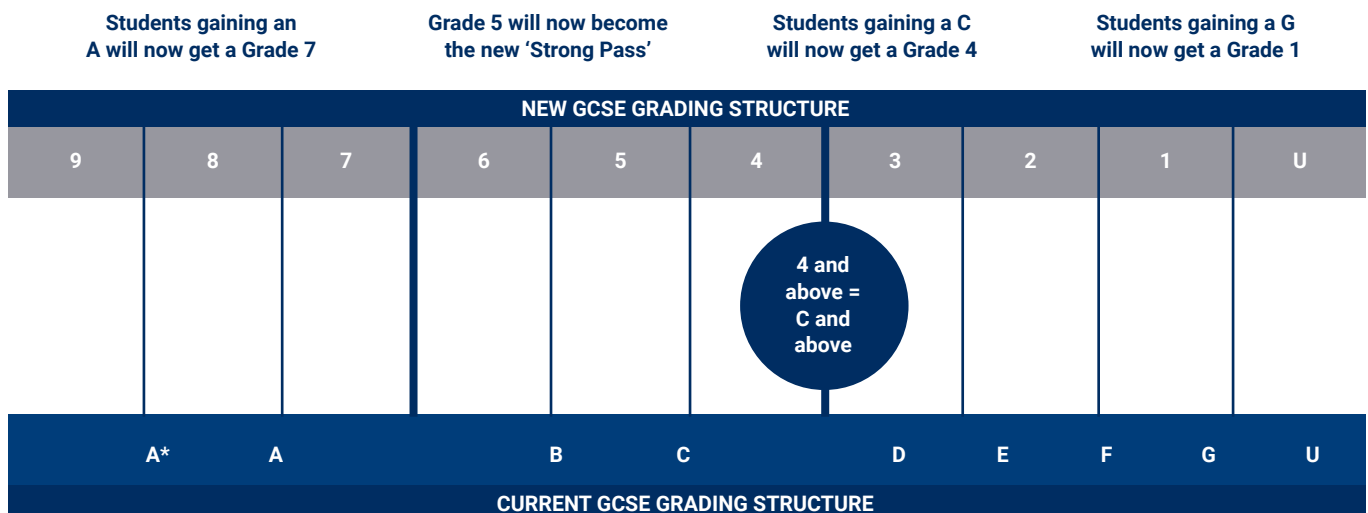
Before starting at our school, students will sit Cognitive Ability Tests (CAT). These are tests of academic potential and are not something for which students will need to revise. These CAT

tests and other baseline assessments carried out in lessons will inform any setting and banding changes that may need to be made.

Band	Home Group	English Group	Maths Group
AB	J	AB1	AB1
	K	AB2	AB2
CD	L	CD1	CD1
	P	CD2	CD2
EF	Q	EF1	EF1
	R	EF2	EF2
GHI	U	GH1	GH1
	V	GH2	GH2
	W	GH3	GH3
X	Y	X1	X1

Once students start at Hessle, regular assessments take place which can lead to changes in setting. At all times, our priority is to ensure that students are in the most appropriate set for their current ability

The image below shows how the 'new' GCSE grades compare to the 'old' GCSE grades.





Attitude to Learning



We expect all students to bring the best of themselves to school and apply their very best effort to all that they do.

We believe that a positive attitude to learning (ATL) is essential for success and we will report on this to parents/carers twice per year. ATL is judged on a 4-point scale with 1 being outstanding. ATL grades are awarded for engagement, homework and for behaviour providing the information that you need to have meaningful conversations with your child.

We ask all students to:

- Try hard at all times
- Be polite and considerate to everyone
- Respect the classroom rules
- No bullying or anti-social behaviour
- Wear their uniform with pride
- Respect the environment, school property and other people's possessions
- Respect our Academy Values



Uniform



Compulsory items with logo:

Blazer

Black with school logo worn properly with sleeves down.

Tie

House tie must be worn properly with six visible stripes.

Indoor PE Kit

Royal blue polo shirt with school logo and house colours. Royal blue shorts, white socks. No outdoor shoes to be worn for indoor activities.

Outdoor PE Kit

Hooded top with school logo and house colours. Royal blue shorts, royal blue socks. Tracksuit bottoms may be worn as well as school kit, not instead of, and must be black. Football boots should be worn for hockey, rugby and football. In the Summer term, indoor kit shall be worn for outdoor activities.



Compulsory items:

Shirt

Plain white, loose fitting with pointed shirt style collar, suitable for wearing a tie.

Trousers

Plain black, full length, waist high, tailored trousers. NO cords, jeans, denim, ski pants, leggings, jeggings, combat style or linen trousers.

Skirt

Plain black knee length, tailored, flared, pleated or 'A' line. NO lycra, clingy or stretchy fabric.

Technology

Apron (non plastic). Footwear as below for health and safety reasons.

Footwear

Plain, black, polishable shoes with flat or low heel. NO types of trainer allowed. NO canvas, suede, sandals or boots are permitted. Shoes with any form of decoration are not permitted.

Jewellery/Piercing

One small, metal stud may be worn in each ear. No other jewellery or studs in face or body should be worn.

Make Up

Makeup must not be worn or brought into school. False eyelashes, painted or dyed eyebrows are not permitted.

Nails

Varnish, acrylic, artificial, gel and any other nail enhancements are not permitted.

Hairstyles

Extremes of unnatural hair colour will not be accepted. Stripe/ patterns, mohican or mohawk styles are not permitted.

For more information please refer to the uniform policy on the website.

High street shops often sell a range of skirts/trousers under the banner of 'school uniform', some of these are deemed inappropriate. Confirm your selection with the Student Services team before purchase if in any doubt.



Policies & Communication



School Policies

Please visit www.thehessleacademy.co.uk to see a full list of our Hessle High School & Sixth Form College policies.

The following policies are essential reading. Feel free to contact us for any further information.

- Access to Education (Attendance Policy)
- Anti Bullying Policy
- Behaviour Policy
- Child Protection Policy
- Data Protection Policy and Privacy Statement
- Drugs Policy
- ICT Policy
- No Smoking Policy
- Teaching and Learning Policy
- Sex and Relationship Education Policy
- Visions and Values Statement
- Uniform Policy
- School News

Communication

Effective communication between Hessle High School and the parents/carers for our students is extremely important, with this in mind we have invested into an electronic communication system which enables us to communicate more regularly with you regarding your child's achievements, attendance and academic progress.

You are also able to check and update your contact details in a more convenient way than contacting the school.

We have also invested into a parent's evening booking system enabling you to make appointments with your child's teachers on Parents Evening with a few clicks of a button. By communicating with our parents/carers in a paperless fashion, you will be helping us reduce the paper produced by the school.

Media

Keep up to date with school life and activities by regularly visiting our website and Twitter feed.

Website: www.thehessleacademy.co.uk/hessle-high
Twitter: @HessleHigh

Keep up to date with school life...



Keep up to date with school life and activities by regularly visiting our website and Twitter feed.



@HessleHigh

www.thehessleacademy.co.uk/hessle-high

School Meals & Online Payments

The school dining hall offers a light and airy space for children to sit, eat and chat with their friends before school when breakfast is available, at break and lunchtimes.

Children who eat packed lunch are able to sit with their peers who are eating a catered lunch, providing a really sociable activity time.

In addition, we provide a tuck shop at the end of school for those staying at after school clubs or study sessions.



ParentPay

ParentPay is the school's online payment system, designed to make paying for a wide range of school services compatible with the busy lives we all lead as parents/carers.

You will receive an individual password for your child, this account must be activated by logging into ParentPay.

The purchases your child makes for meals is automatically deducted from your ParentPay account. You can view the meal choices your child has made.

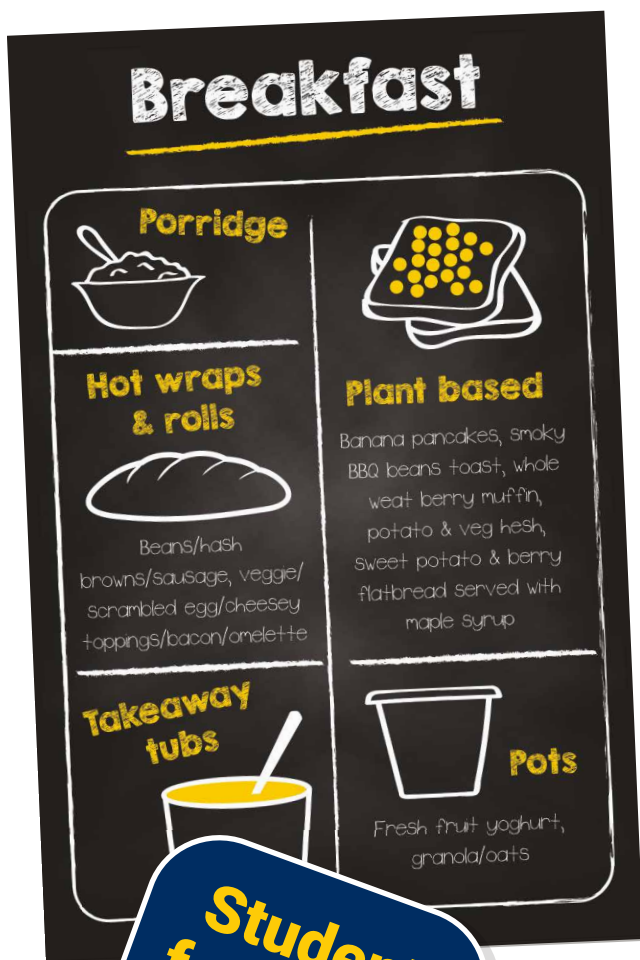
Biometrics

The cafeteria service works on a cashless biometric finger image system and provides many benefits in terms of convenience, safety and security for our students.

The biometric links to your ParentPay account.

Our high quality catering provision is undertaken by ABM Caterers, further information and sample menus can be accessed via www.thehessleacademy.co.uk





Student feedback on the food

How Do I Get Started?

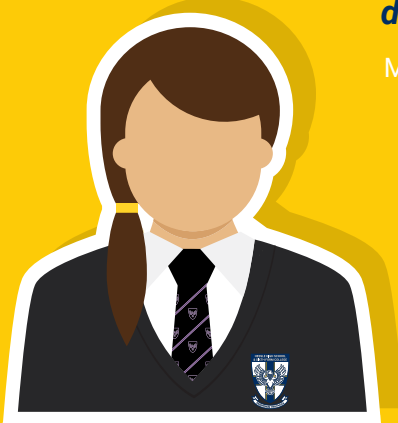
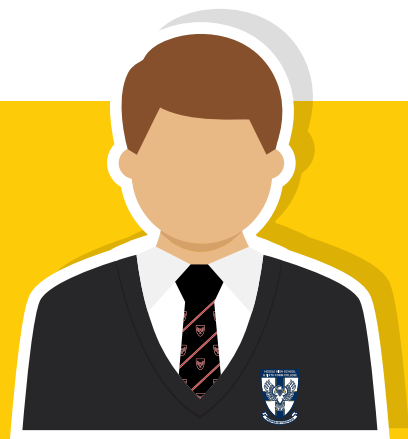
Log on to www.parentpay.com using the username and password we will provide you with.

During the activation process you will be guided through changing your username and password to something more memorable. If you have misplaced your log in details, please contact us for a replacement.

More information can be found on the ParentPay website, in the Parents section. Click on Help and Support for user guides that detail the functionality available; from making payments, viewing lunch purchases, merging your accounts if you have more than one child at a school that uses ParentPay.

"In my opinion the lunches are great because the canteen is massive so you can sit with your friends. The meals are great and there are different meals for people who like different things."

Miller, Year 7 Student



"The food in the canteen offers a good variety of options for both hot and cold meals. The beauty of a cashless system is that parents do not have to find money to give their children in the morning. Also there is no danger of children losing their money."

Molly, Year 7 Student



Sample Menu



MENU



Monday

Main meal - homemade beef burger topped with cheese

Onion bhaji burger served with mint and yoghurt sauce

Korean chicken bao buns with south Asian 'slaw

Meatballs italiano

Penne arrabiata

Margherita, pepperoni pizza slice

Tuesday

Main meal - chicken enchiladas topped with cheese and served with sour cream

Vegetarian quorn chili served with savoury rice

Vegetable kathi wrap loaded with spicy veggies and rice

Spicy chicken wings

Onion bhaji with mint sauce

Mozzarella & pineapple, hawaiian pizza slice

Wednesday

Main meal - spaghetti bolognese

Broccoli, pasta bake

Chicken gyro pittas with peppers, tzatziki

Chicken alfredo

Spaghetti pomodoro

Margherita, spicy chicken pizza slice

Thursday

Main meal - chicken curry served with pilau rice

Spinach and lentil curry served with pilau rice

Mexican bean salad, tortilla bowl

Chili beef con carne

Mac 'n' cheese

Tomato, green chili, mozzarella American hot pizza slice

Friday

Main meal - breaded fish fingers, chips with peas & tartare sauce

Cheese & tomato quiche

Loaded hot dogs with a choice of chili, mustard & onions or pulled pork toppings

BBQ chicken wings

Patatas bravas

Margherita, BBQ chicken pizza slice

Desserts

Hot banana cake with chocolate sauce

Drop pancakes served with cherry sauce & ice cream

Keylime pie

Apple crumble & ice cream

Bakewell tart





All the staff from the Headteacher to the Caretaker seem to genuinely care for the children from a pastoral and academic point of view.



Ofsted report 2018,
Parent survey comment.



Respect
Resilience
Aspiration
Responsibility
Integrity
Kindness



**THE
HESSLE
ACADEMY**



THE CONSORTIUM
ACADEMY TRUST

Hessle High School & Sixth Form College
Tranby House
Heads Lane
Hessle
East Riding of Yorkshire
HU13 0JQ

Tel: (01482) 648604
hhsoffice@hessleacademy.com

 @HessleHigh